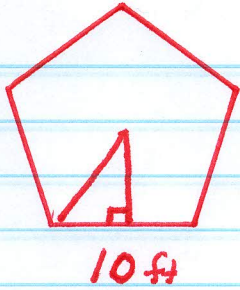


Notes Reg Polygons using Trig
Round at end only

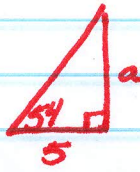
ex1



$$\begin{aligned} p &= 5(10) \\ p &= 50 \text{ ft} \end{aligned}$$

$$A = \frac{ap}{2}$$

$$A = \frac{(5 \tan(54))(50)}{2}$$

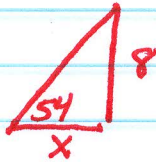
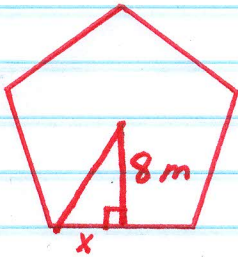


$$\tan 54 = \frac{a}{5}$$

$$A = 172.05 \text{ ft}^2$$

$$5 \tan 54 = a$$

ex2



$$\tan 54 = \frac{8}{x}$$

$$A = \frac{ap}{2}$$

$$x = \frac{8}{\tan 54}$$

$$A = \frac{8 \left(\frac{8}{\tan 54} \right) (10)}{2}$$

$$p = \left(\frac{8}{\tan 54} \right) (10)$$

$$A = 232.49 \text{ m}^2$$

$$p = 58.12 \text{ m}$$

