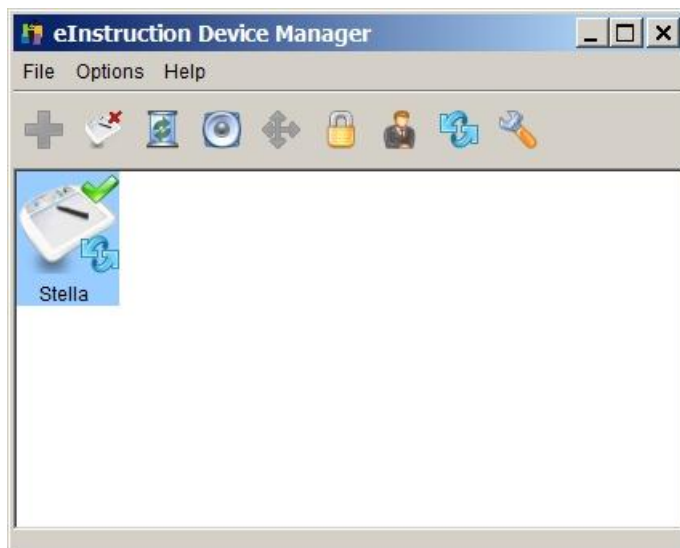


Mobi Firmware Update How-to:

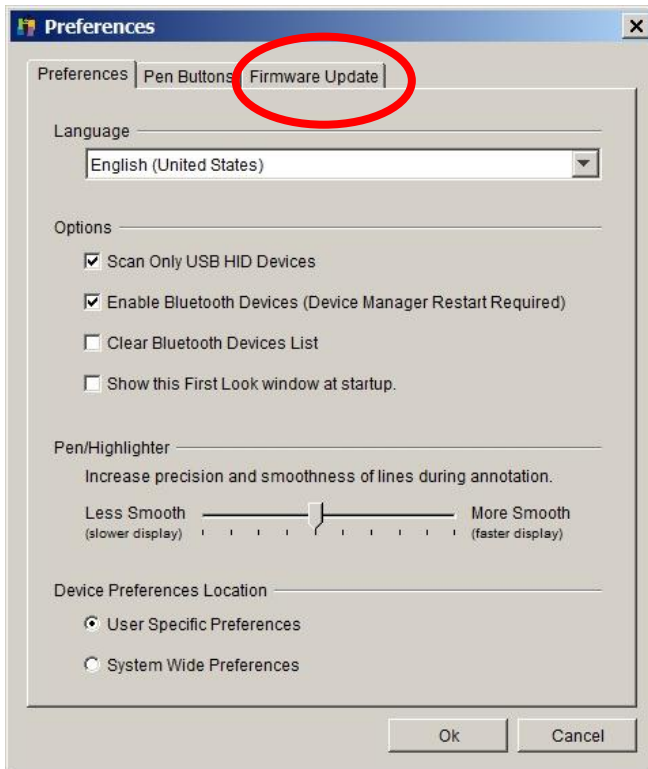
1. Begin by connecting your Mobi to the computer with the cable. Insert your Mobi USB RF Adaptor into the computer, also.
2. Click to open Interwrite Workspace software on the desktop.
3. From the tool bar, click the drop down button with the triangle. Select Device Manager. 
4. You will see this screen. Click to highlight your Mobi.



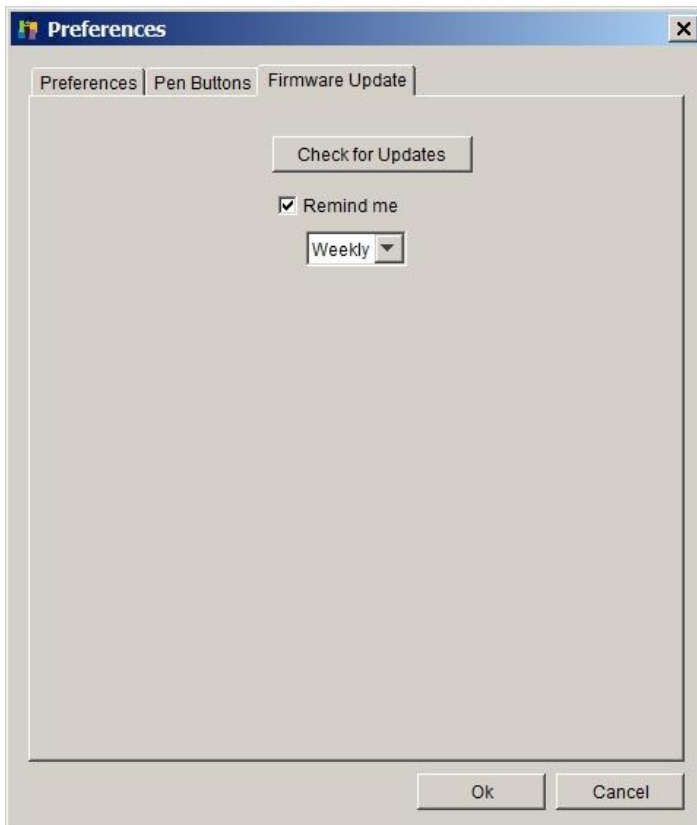
5. Next, click File: Preferences



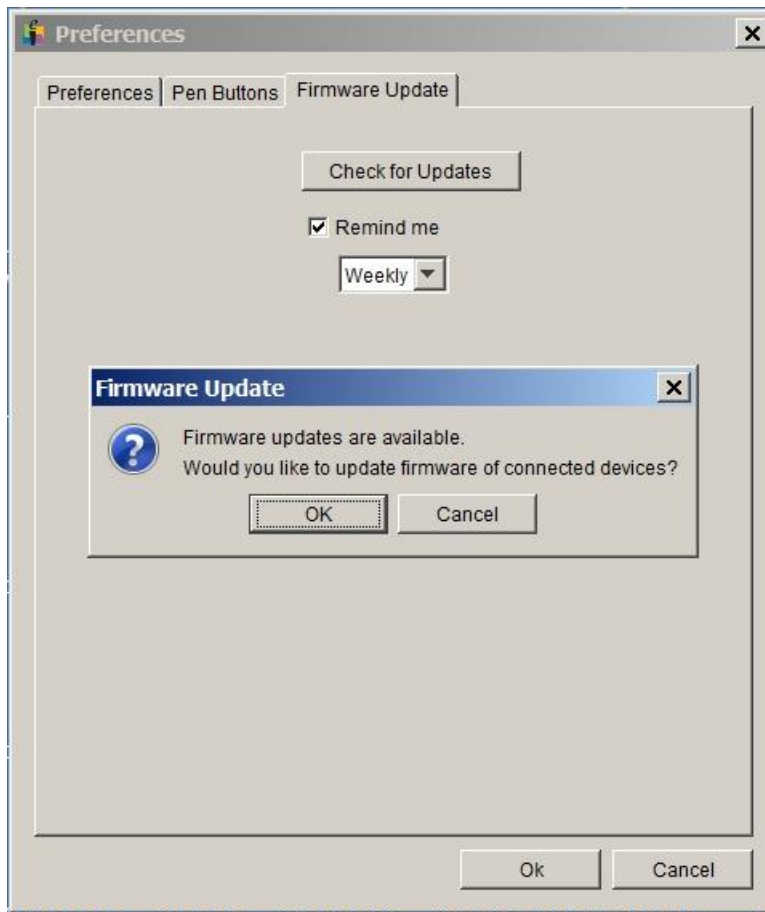
6. Select the Firmware Update tab.



7. Click Check for Updates.



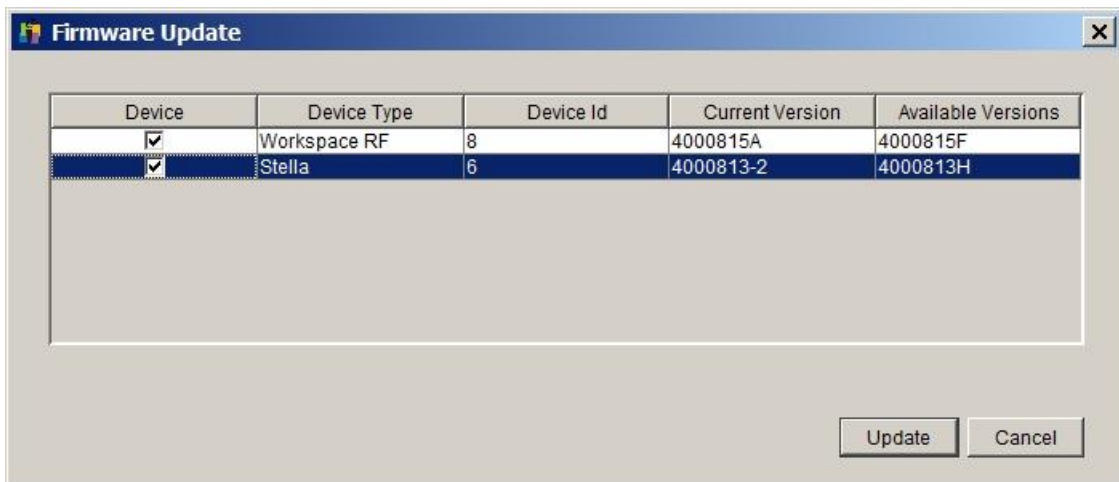
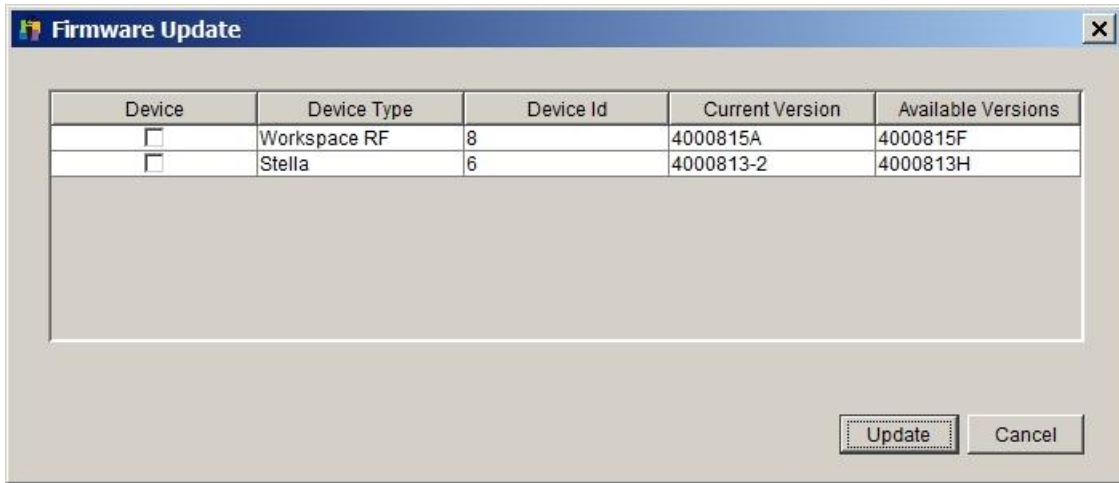
8. If there are updates available, click OK. If not, make sure you have indeed plugged in the Mobi cable AND the Mobi USB RF Adaptor. Check again. If there are still no updates, then your firmware is fine!



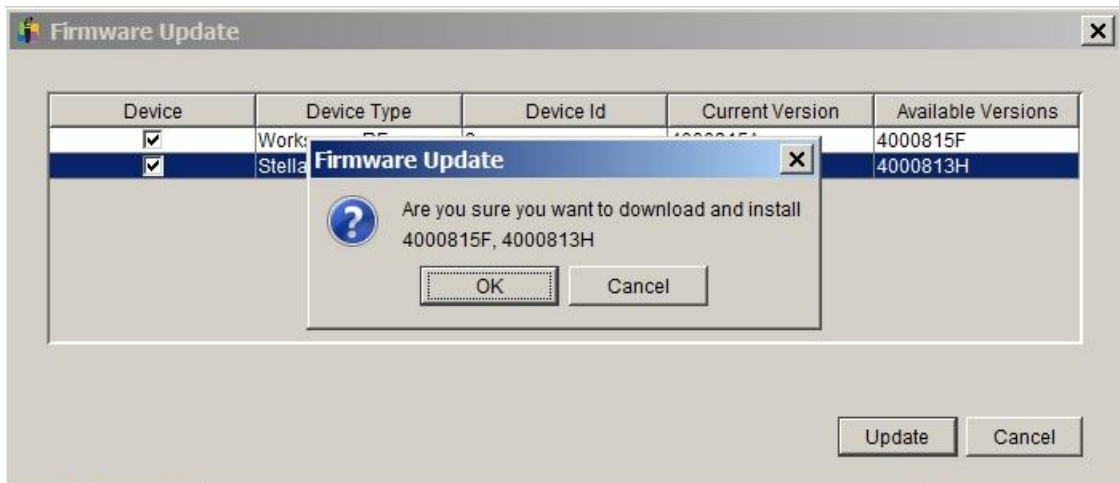
9. Click next.



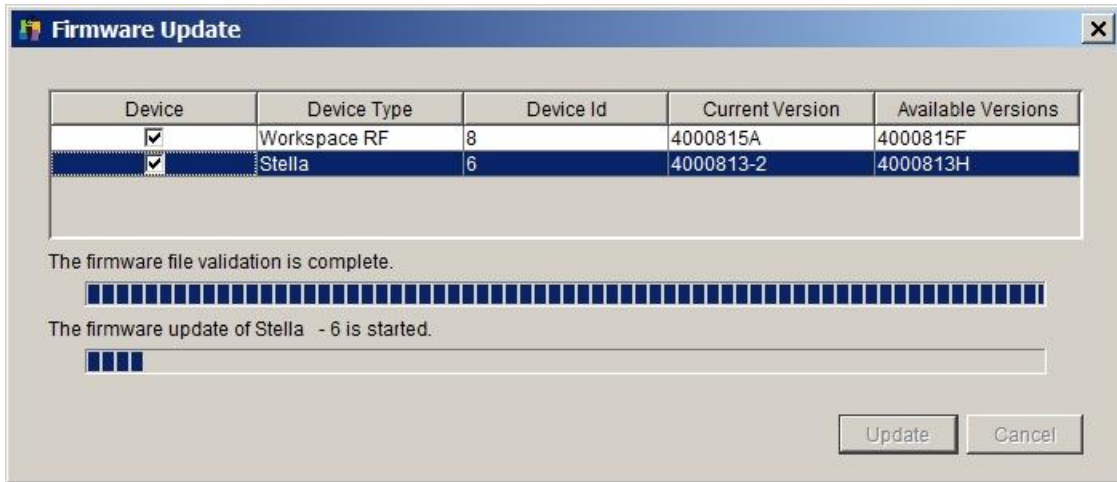
10. Check the boxes for both your Mobi board and USB RF Adaptor. Click Update.



11. Click OK!



12. Your devices will update. This takes less than 5 minutes.



13. Finished! Click Finish. Disconnect your Mobi and turn off.

