

One Lunch Update 2018-2019

The mission of Kingwood High School is to create a collaborative learning environment that is supportive, challenging, and disciplined, resulting in life-long learners whose exemplary performance is a credit to themselves and their community.



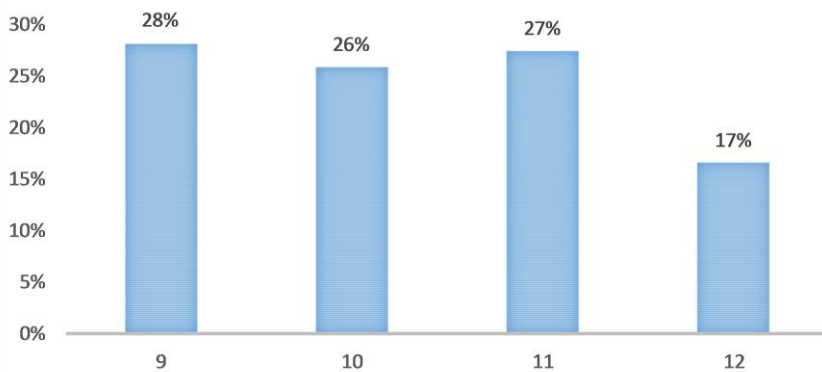
ONE LUNCH provides various opportunities for student access to academic enrichment & intervention, as well as social connections and emotional support.

By the numbers as of 1/25/19

Tutoring & Academic Support

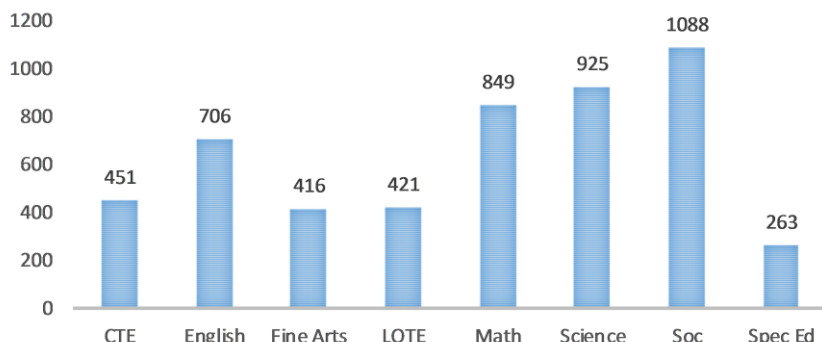
Clubs & Organizations

STUDENTS WHO ATTENDED 3+ TUTORING SESSIONS

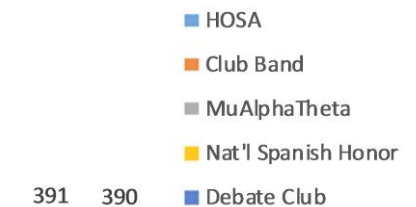


On average, teachers see 512 students each week for tutoring.

FREQUENCY OF STUDENT VISITS



CLUB PARTICIPATION - TOP 5



79 Clubs met with average participation of 72 students.

[Tutoring and Clubs Meeting times](#) can be found here.

Let us know how we can improve ONE LUNCH by sharing your feedback [here](#).